

GLOBAL
express
USA NATIONAL STOCKING PROGRAM



Global Product Navigation

GLOBAL SEATING

Arno.....[4003](#)
.....[4004](#)

Bakhita.....[6750](#)
.....[6751](#)
.....[6754](#)
.....[6783](#)

Citi.....[7875](#)
.....[7876](#)
.....[7877](#)
.....[7885](#)

Concorde [2424-18](#)

Stool Kit [2241](#)
..... [2243](#)

Duet.....[6620](#)
.....[6621](#)
.....[6624](#)

Factor[5540](#)
.....[5541](#)

File Buddy.....[1105](#)

Flap.....[6775](#)
.....[6776](#)
.....[6777](#)

Global Accord.....[2670-4](#)
.....[2671-4](#)

Goal[2237-5](#)
.....[2237-6](#)
.....[2239-6](#)

Loover[2661-8](#)
.....[2662-8](#)

Luray[6461](#)

Popcorn.....[6710](#)
.....[6711](#)
.....[6715](#)
.....[6716](#)

Roma.....[1899](#)

Sidero[6900](#)

Solar[8456](#)
.....[8457](#)

Sonic[6508](#)
.....[6513](#)

Spyker[6790](#)
.....[6791](#)
.....[6756](#)

Synopsis.....[5090-4](#)
.....[5091-4](#)

Truform.....[5451-3](#)

Tye.....[1950-4](#)
.....[1951-4](#)

Vion[6321-8](#)
.....[6322-8](#)

[SEATING AT A GLANCE](#)

GLOBAL WORKSPACE + MEETING AREAS

- [Bakhita Tables](#)
- [Foli Height Adjustable Tables](#)
- [Monitor Arms](#)
- [Swap Tables](#)

GLOBAL FILING + STORAGE

- [9300 Plus Lateral Files](#)
- [File Buddy 1105](#)
- [Storage Cabinets](#)

Think Global. Think Green.

The Environment — We believe now more than ever, that it is our responsibility to protect the environment and our precious natural resources for future generations. The growing importance of energy and environmental concerns continues to challenge us in this ever changing marketplace.

As an industry leader, Global continues to take proactive steps towards reducing the negative impacts on the environment. We are building “healthier” offices; investing in Research & Development and new technologies; reducing waste and the consumption of energy; and improving the quality of the air we breathe, all which can have a significant impact on our quality of life.

Global's recycled fabrics offer affordable, environmentally responsible alternatives to commercial textiles. We recycle 35,000 lbs. of fabric off cuts.

Epoxy powder coating process is solvent free. No harmful VOC's or lead. No toxins are released into the atmosphere.

Global has the products and resources to help your projects achieve LEED certification.

New technology allows us to reduce glue usage by 50%. In addition, our water based glue reduces emissions and requires less energy to apply.



Greenguard Certification

The GREENGUARD mark means that a product has been tested using stringent environmental chamber methods and found to meet GREENGUARD's Indoor Air Quality Standards. GREENGUARD Certified Products are low emitting and contribute minimal levels of pollutants to indoor environment.



Level Certification

level™ certification, based on the ANSI/BIFMA e3-2012 furniture sustainability standard, sets furniture manufacturers on a path toward greater sustainability over time. Based on environmental and social criteria set forth in the standard, a product's entire supply chain is assessed.



What's covered under the Global Lifetime Warranty?



Global's Lifetime Warranty covers manufacturer defects for seating, desks, tables, panels, metal storage and filing... everything you would need in a contract work environment covered for the life of the product.

NO WORRIES on plastic components, casters, glides, pneumatic cylinders, arm structures, arm caps and bases

NO WORRIES on drawer slides, trays, locks, keys, metal legs and grommets.

NO WORRIES on panel frames, edges and work surfaces.

For complete details, visit www.globalfurnituregroup.com.

Symbols + Identification



All seating product shown throughout this catalog is suitable for FedEx or UPS shipment **unless otherwise noted**.

Contents

GLOBAL

Seating Solutions
Work + Task Solutions2-15
Conference + Management Solutions16-27
Lounge + Reception Solutions.....28-31
Stack, Nesting + Guest Solutions.....32-41
Seating at a Glance42-47

Workspace + Meeting Areas Solutions
Monitor Arms.....50-51
Swap Tables 52
Bakhita Tables 53
Foli Height Adjustable Tables..... 54
Workspaces at a Glance 55

Filing + Storage Solutions
9300 Plus Lateral 58
File Buddy..... 59
Storage Cabinets..... 59

REFERENCE

Green Story Inside Front Cover
Global Warranty Inside Front Cover
Offices to Go Warranty Inside Front Cover
Symbols + Identification..... Inside Front Cover

Why wait when you can have it all now?

Inside, you will find numerous workplace furniture solutions — seating, desks, files, tables and accessories — all at different price points — **and all available for quick delivery!**



work + task



Factor 5540-8
Mesh High Back Weight Sensing Synchro-Tilter with seat slider (-8), Height Adjustable arms (U2)
List Price **\$856**
Shown Fusion, Carbon (FU85) with Black Frame (BK) and Black Mesh (P-6)



Factor 5541-8
Mesh Mid Back Weight Sensing Synchro-Tilter with seat slider (-8), Height Adjustable arms (U2)
List Price **\$815**
Shown in Fusion, Carbon (FU85) with Black Frame (BK) and Black Mesh (P-6)

Factor™

Factor seating series recalculates the value equation for work chairs with an asymmetrical lumbar support, weight sensing synchro mechanism and adjustable arms.

Mid and high backrests are upholstered in a breathable mesh offering continuous support

Durable, lightweight frame

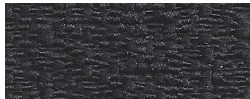
Height adjustable and split down the middle to flex independently side-to-side

Adjustable lumbar support provides personalized comfort and is standard on all models

Height adjustable arms (U2)

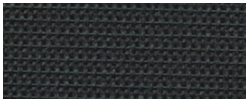
Available immediately in the following textiles:

Fusion



FU85 Carbon

Mesh



P-6 Black



Highlighted models are being phased out of the Express Program. Please inquire for availability.

For specifications and dimensions see pages 42.





Vion™

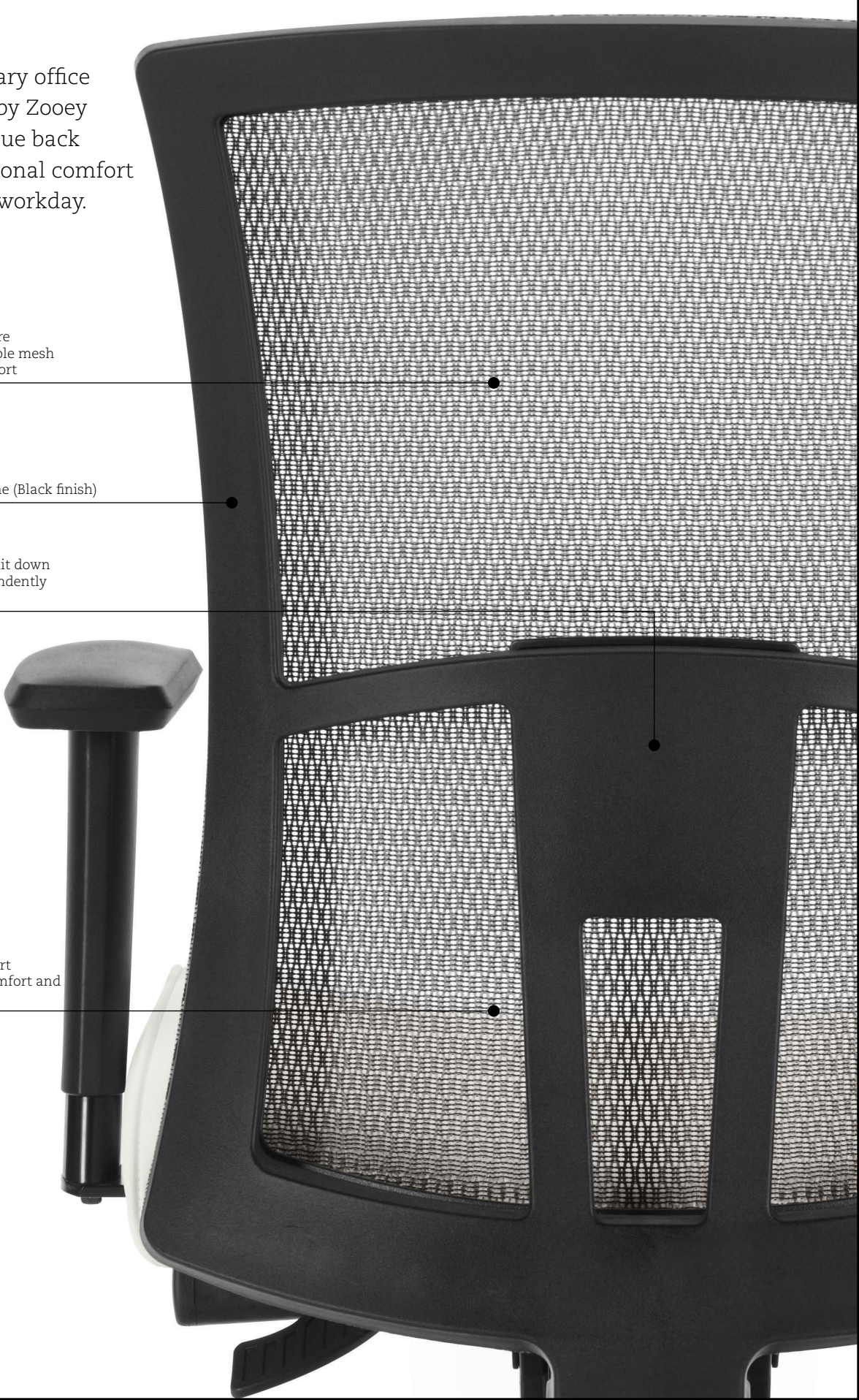
Vion is no ordinary office chair. Designed by Zooey Chu, Vion’s unique back provides exceptional comfort throughout the workday.

Mid and high backrests are upholstered in a breathable mesh offering continuous support

Durable, lightweight frame (Black finish)

Height adjustable and split down the middle to flex independently side-to-side

Adjustable lumbar support provides personalized comfort and is standard on all models



Vion 6321-8
Mesh High Back Weight Sensing Synchro-Tilter - Black frame
List Price ***998**
Shown in Urban, Black Coal (UR22)



Vion 6322-8
Mesh Medium Back Weight Sensing Synchro-Tilter - Black frame
List Price ***945**
Shown in Urban, Black Coal (UR22)

Available immediately in the following textiles:

Urban

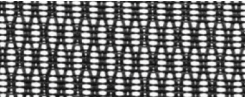


UR20 Granite Rock



UR22 Black Coal

Mesh



MS69 Black Vion
Mesh

For specifications and dimensions see pages 42.

Truform®

Truform offers value, comfort and a choice of mechanisms to suit any application



Truform 5451-3
Medium Back Multi-Tilter
List Price ***925**
Shown in Jenny, Ebony (JN02)

Available immediately
in the following textile:



JN02 Ebony



For specifications and dimensions see page 43.

Tye™

The Tye series offers tremendous value in air-flow mesh technology, as well as style.



Tye 1950-4
Mesh High Back Tilter
List Price ***881**
Shown in Dobby, Black (DB42) with Black Mesh



Tye 1951-4
Mesh Medium Back Tilter
List Price ***842**
Shown in Dobby, Black (DB42) with Black Mesh

Available immediately
in the following textile:



DB42 Black



For specifications and dimensions see page 42.



Black

Loover™

Loover features an open back frame upholstered with Vue mesh for individual comfort.



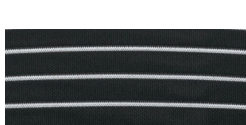
Loover 2662-8
Mesh Medium Back Weight Sensing Synchro-Tilter
List Price ***1083**
Shown in Urban, Black Coal (UR22) with Vue Mesh, Coal Black (VU19)



Available immediately
in the following textiles:



UR22 Black Coal



VU19 Coal Black



Loover 2661-8
Mesh High Back Weight Sensing Synchro-Tilter
List Price ***1132**
Shown in Urban, Black Coal (UR22) with Vue Mesh, Coal Black (VU19)



For specifications and dimensions see page 43.

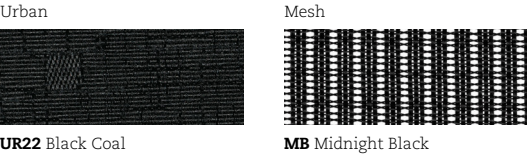
Roma™

Roma fits the bill without taking up too much space.



Roma 1899*
Mesh Back Nesting Armchair
List Price **\$773**
Shown in Urban, Black Coal (UR22) with Black Mesh

Available immediately
in the following textile:



**Not suitable for FedEx or UPS shipment*
For specifications and dimensions see pages 47.

Goal™

Goal is ergonomically and economically engineered for maximum comfort with multiple features typically found on more expensive seating.



Goal 2237-6
Low Back Task
List Price **\$503**
Shown in Fusion, Carbon (FU85)

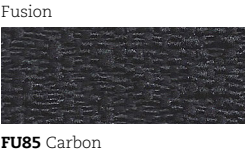


Goal 2239-6
Low Back Task - Armless
List Price **\$388**
Shown in Fusion, Carbon (FU85)



Goal 2236-6
Height Adjustable Stool - Armless
List Price **\$575**
Shown in Fusion, Carbon (FU85)

Available immediately
in the following textile:



For specifications and dimensions see page 42.



Height Adjustable Stools

Pair these height adjustable stools and stool kits with Global’s height adjustable tables for a truly comfortable ergonomic work environment.



Stool Kit 2241
Height Adjustable Stool Kit with 6" Extension Tube
List Price **\$391**

For use with existing task chairs. Kit contains Black four-spoked footrest with chrome outer ring, extension tube and Black 26.5" chair base. Casters not included.



Stool Kit 2243
Height Adjustable Stool Kit with 10" Gas Cylinder
List Price **\$604**

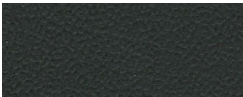
For use with existing task chairs. Kit contains Black four-spoked footrest with chrome outer ring, 10" pneumatic gas cylinder and Black 26.5" chair base. Casters not included.



File Buddy 1105
Pneumatic Swivel Stool
Dimensions: 14dia x 16.25h - 21.25h
List Price **\$447**
Shown in Allante FRee, Ink (A16F).

Available immediately in the following textile:

Allante FRee



A16F Ink



Goal 2236-6
Height Adjustable Stool - Armless
List Price **\$575**
Shown in Fusion, Carbon (FU85)

Available immediately in the following textiles:

Fusion



FU85 Carbon



conference + management



Global Accord™

Global Accord features a finely detailed Polished Aluminum arm with a sling style back, upholstered with rolled and pleated details.



Global Accord 2670-4
High Back Tilter
List Price ***1377**
Shown in Allante FRee, Ink (A16F)



Global Accord 2671-4
Medium Back Tilter
List Price ***1334**
Shown in Allante FRee, Ink (A16F)



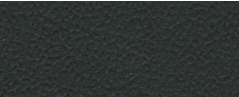
Features



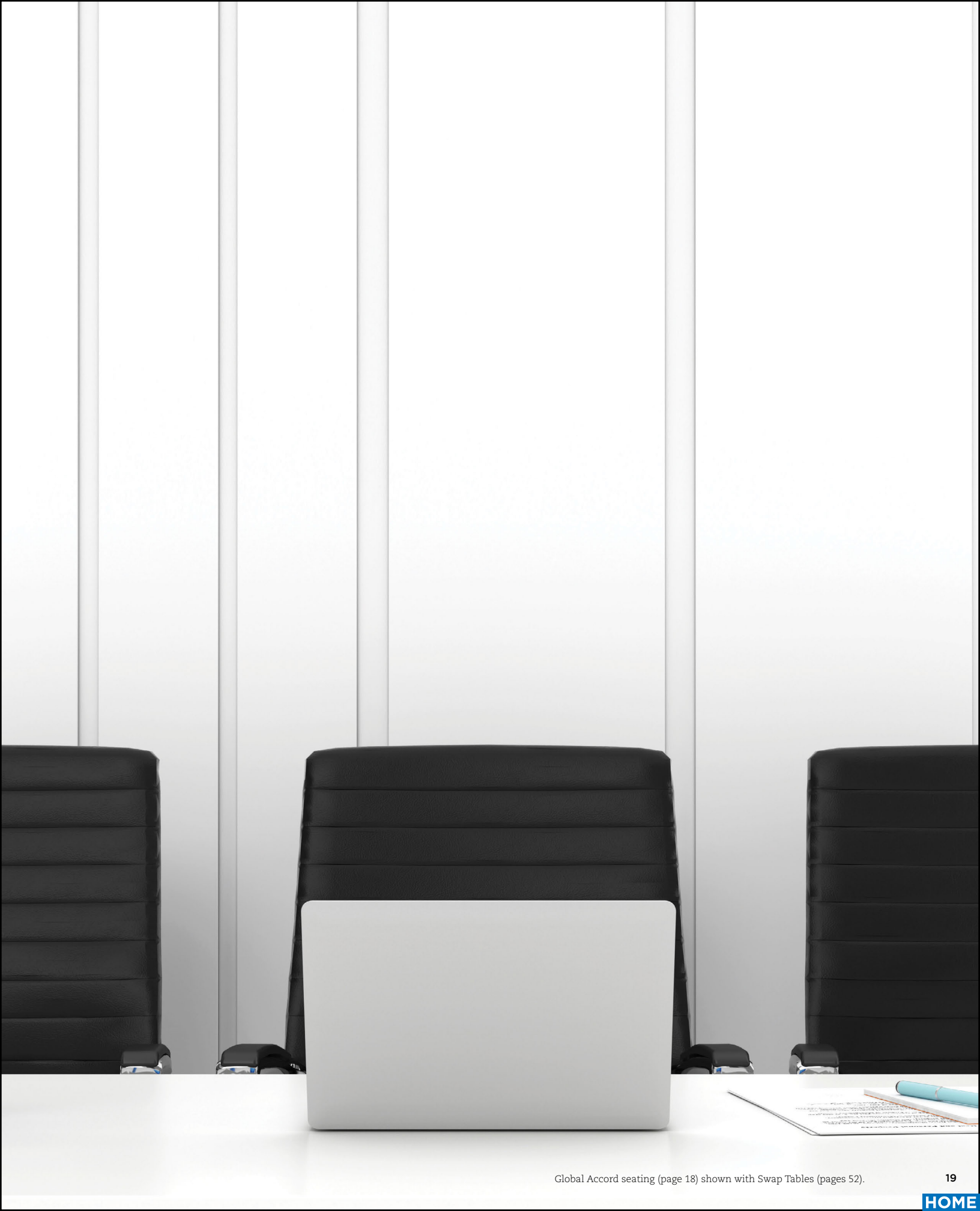
Polished Aluminum arms with soft, warm armrests.

Available immediately
in the following textiles:

Allante FRee Vinyl



A16F Ink



Solar™

The one-piece frame and matching base are available in Alabaster and Asphalt along with two coordinating mesh colors.



Solar 8457
Medium Back Mesh Tilter
List Price **\$1193**
Shown in Midnight (MDN) Mesh and Alabaster (ABR) frame



Solar 8456
Medium Back Mesh Tilter
List Price **\$1088**
Shown in Storm (STM) Mesh and Asphalt (APT) frame



Available immediately
in the following textile + finish:

Mesh



MDN Midnight

Plastic

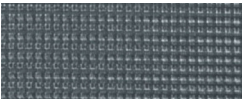


ABR Alabaster



Available immediately
in the following textile + finish:

Mesh



STM Storm

Plastic



APT Asphalt

For specifications and dimensions see page 43.





Synopsis®

A family of products with exceptional value and a transitional design defines Synopsis.



Synopsis 5090-4
High Back Tilter
List Price **\$752**
Shown in Urban, Black Coal (UR22)



Synopsis 5091-4
Medium Back Tilter
List Price **\$705**
Shown in Urban, Black Coal (UR22)

Available immediately
in the following textiles:

Urban



UR22 Black Coal



For specifications and dimensions see page 43.

Luray™

As the workplace continues to change, meetings and conferences can still be long days with demanding agendas. Luray provides ample proportions and full back support in an upholstered seating series to keep participants at their best.



Luray 6461
High Back Tilter
List Price **\$1327**
Shown in Allante FRee Vinyl, Ink (A16F)

Mechanism



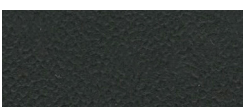
Tilter



Plastic fixed arm with self-skinned urethane (ssu) armcap

Available immediately
in the following textiles:

Allante FRee Vinyl (Grade 2)



A16F Ink



For specifications and dimensions see page 44.

Arno™

Perforated leather upholstery panels, one in the seat and one in the back.



Arno 4003
High Back Tilter
List Price **\$540**
Shown in Luxhide, Black (BL20)



Arno 4004
Armchair
List Price **\$540**
Shown in Luxhide, Black (BL20)

Mechanism



Tilter

Features



Plastic Arm



Black (BK) Base



Perforated Leather

Available immediately
in the following textile:

Luxhide



BL20 Black



For specifications and dimensions see pages 43, 47.

Concorde®

Concorde is a dual purpose chair; intended for both sophisticated executives and for challenging 24 hour environments that require deep comfort and adjustability.



Concorde 2424-18*
Executive 24 Hr High Back Synchro-Tilter
List Price **\$4388**
Shown in Prescott Leather (Grade 10), Black Ink (PD03)



Mechanism



Revolutionary push button controls located on the armrest provide state-of-the-art ergonomic adjustment for exceptional comfort and support.

Features



Tilt Lock Adjustment

Seat Height Adjustment

Sliding Seat Adjustment

Back Height Adjustment

Available immediately
in the following textile:

Prescott Leather (Grade 10)



PD03 Black Ink



**Not suitable for FedEx or UPS shipment*
For specifications and dimensions see page 44.

lounge + reception



Citi™

Each piece in the Citi series complements every other: sofas meld with coffee and end tables, lounge chairs and ottomans pair with sectional pieces, fabrics and finishes harmonize.



Citi 7876*
Two Seat Sofa
List Price **\$2046**



Citi 7877*
Three Seat Sofa
List Price **\$2575**



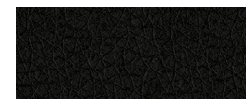
Citi 7875*
Lounge Chair
List Price **\$1517**



Citi 7885
End Table with Laminate Top
List Price **\$827**

Available immediately
in the following textile:

Luxhide



BL20 Black



**Not suitable for FedEx or UPS shipment*

For specifications and dimensions see page 45.



stack, nesting + management

Bakhita - INDOOR/OUTDOOR

This versatile polymer chair is UV and weather resistant and can be used in casual dining areas, educational facilities, meeting rooms, pool side, on patios and healthcare rooms.



Bakhita 6750
Stacking Armchair
List Price **\$294**
Shown in Alloy (ALY)

Bakhita 6751
Stacking Side Chair
List Price **\$261**
Shown in Alloy (ALY)

Bakhita 6754
Armless Bar Stool
List Price **\$395**
Shown in Alloy (ALY)

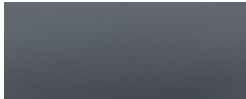
Bakhita + Spyker 6783
Dolly
List Price **\$347**



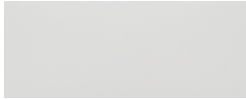
Available immediately
in the following plastic finishes:



ALY Alloy



CHA Char



MLK Milk

6780 Round Table shown in Milk (MLK) with 6751 Side Chair shown in Milk (MLK). For Bakhita tables see page 53.

For specifications and dimensions see page 46.



Flap - INDOOR/OUTDOOR

A modern, high quality, lightweight, all polymer folding chair. Flap is weather resistant, UV resistant, stain resistant, 100% non-ferrous and is bleach cleanable, making it a perfect option for any environment where additional seating is needed, indoor or out.



Flap 6775
Folding Chair
List Price **\$214**
Shown in Alloy (ALY)

Flap 6775
Folding Chair
List Price **\$214**
Shown in Milk (MLK)



Flap 6776
Wall Hook
List Price **\$48**

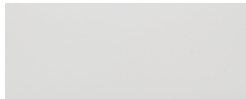


Flap 6777
Dolly
List Price **\$614**

Available immediately
in the following plastic finishes:



ALY Alloy



MLK Milk



For specifications and dimensions see page 47.

Spyker - INDOOR/OUTDOOR

A comfortable, high-quality, lightweight, stacking chair that is incredibly strong and durable. Spyker is an all polymer chair and is weather, UV and stain resistant.



Spyker 6790
Stacking Armchair
List Price **\$261**
Shown in Alloy (ALY)

Spyker 6790
Stacking Armchair
List Price **\$261**
Shown in Char (CHA)



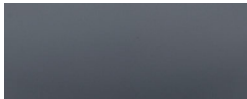
Spyker 6791*
Stacking Side Chair
List Price **\$234**
Shown in Alloy (ALY)

Spyker 6791*
Stacking Side Chair
List Price **\$234**
Shown in Char (CHA)

Available immediately
in the following plastic finishes:



ALY Alloy



CHA Char



**Not suitable for FedEx or UPS shipment*
For specifications and dimensions see pages 46-47.



Spyker (page 40) shown in Alloy (ALY).

Roma®

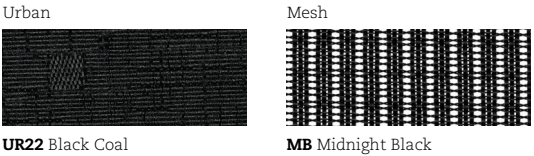
Designed to do it all, Roma is the perfect “everywhere” chair.



Roma 1899*
Mesh Back Nesting Armchair with Casters
List Price **\$773**
Shown in Urban, Black Coal (UR22)



Available immediately in the following textile:



For specifications and dimensions see page 51.

Sidero™

Multi-purpose seating with a sculptured look, featuring wide curved arms and a round tubular steel frame.



Sidero 6900*
Stacking Armchair (shown stacked)
List Price **\$588**
Shown in Urban, Granite Rock (UR20)

Available immediately in the following textiles:



**Not suitable for FedEx or UPS shipment*
For specifications and dimensions see page 47.

Popcorn™



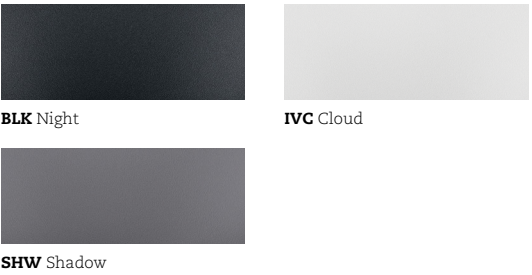
Popcorn 6711*
Armless Stacking Chair
List Price **\$228**
Shown in Cloud (IVC)

Popcorn 6715
Dolly (shown with 6711 in Cloud (IVC) stacked)
List Price **\$772**



Popcorn 6716
Clear Glides (set of 2)
List Price **\$19**

Available immediately in the following plastic finishes:

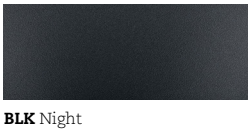


**Not suitable for FedEx or UPS shipment*
For specifications and dimensions see page 46.



Popcorn 6710*
Stacking Armchair
List Price **\$347**
Shown in Night (BLK)

Available immediately in the following plastic finishes:



Sonic™



Sonic 6508
Armless Stacking Chair (shown stacked)
List Price **\$331**
Shown in Night (BLK)



Sonic 6508
Armless Stacking Chair
List Price **\$331**
Shown in Black (BLK)



Sonic 6513
Stacking Armchair
List Price **\$403**
Shown in Night (BLK)

Duet™



Duet 6620*
Stacking Armchair
List Price **\$368**
Shown in Night (BLK)

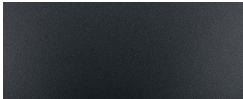


Duet 6621
Armless Stacking Chair
List Price **\$261**
Shown in Shadow (SHW)



Duet 6624
Dolly (shown with 6621 in
Cloud (IVC) stacked)
List Price **\$772**

Available immediately
in the following
plastic finishes:

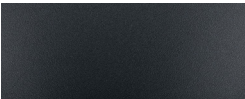


BLK Night



For specifications and dimensions see page 47.

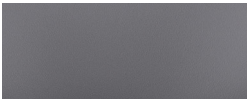
Available immediately
in the following plastic finishes:



BLK Night



IVC Cloud



SHW Shadow



**Not suitable for FedEx or UPS shipment*
For specifications and dimensions see page 46.



Goal 2239-6 - page 13
Low Back Task - Armless
Dimensions: 25w x 24.5d x 39h
Ergonomic Features: C, D, E, N

- Standard with a five-legged, injection molded “spider” base and C65 casters
- Base and frame available in Black (BK) only
- Fusion, Carbon (FU85)

List Price **\$388**



Goal 2237-6 - page 13
Low Back Task
Dimensions: 25w x 24.5d x 39h
Ergonomic Features: C, D, E, H, N

- Standard with adjustable height T-arms with curved urethane armcaps (3N) in Black only
- Standard with a five-legged, injection molded “spider” base and C65 casters
- Base and frame available in Black (BK) only
- Fusion, Carbon (FU85)

List Price **\$503**



Factor 5541-8 - page 4
Mesh Mid Back Weight-Sensing Synchro-Tilter
Dimensions: 26.5w x 24d x 39h
Ergonomic Features: A, B, C, D, E, H, L, M, N, U

- Pneumatic seat height adjustment
- Adjustable lumbar support
- Height adjustable arms (U2)
- Black frame (BK)
- Fusion, Carbon (FU85)

List Price **\$754**



Factor 5540-8 - page 4
Mesh High Back Weight-Sensing Synchro-Tilter
Dimensions: 26.5w x 24d x 41h
Ergonomic Features: A, B, C, D, E, H, L, M, N, U

- Pneumatic seat height adjustment
- Adjustable lumbar support
- Height adjustable arms (U2)
- Black frame (BK)
- Fusion, Carbon (FU85)

List Price **\$792**



Tye 1951-4 - page 10
Mesh Low Back Tilter
Dimensions: 25w x 26d x 41h
Ergonomic Features: A, C, E, H, M, N

- Contemporary mesh fabric and upholstered panels are used on chair backs
- Adjustable height T-arms with curved urethane armcaps (3N) in Black Only
- Five-legged, injection-molded “spider” base
- C65 casters are standard
- Seat depth and pneumatic seat height adjustments. Tilt tension adjustment with tilt lock
- Dobby, Black (DB42)

List Price **\$842**



Tye 1950-4 - page 10
Mesh High Back Tilter
Dimensions: 25w x 26d x 45.5h
Ergonomic Features: A, C, E, H, M, N

- Contemporary mesh fabric and upholstered panels are used on chair backs
- Adjustable height T-arms with curved urethane armcaps (3N) in Black Only
- Five-legged, injection-molded “spider” base
- C65 casters are standard
- Seat depth and pneumatic seat height adjustments. Tilt tension adjustment with tilt lock
- Dobby, Black (DB42)

List Price **\$881**



Vion 6322-8 - page 9
Mesh Medium Back Weight Sensing Synchro-Tilter
Dimensions: 25.5w x 24d x 38h
Ergonomic Features: A, B, C, E, H, L, M, N, Q

- Pneumatic seat height adjustment
- Black five-prong, injection molded, fiberglass reinforced nylon Governor base (B7) with dual wheel carpet casters (C1)
- Height and width adjustable arms (AS) that feature a front to back sliding armcap
- Urban, Granite Rock (UR20)
- Urban, Black Coal (UR22)

List Price **\$945**



Vion 6321-8 - page 9
Mesh High Back Weight Sensing Synchro-Tilter
Dimensions: 25.5w x 24d x 40h
Ergonomic Features: A, B, C, E, H, L, M, N, Q

- Pneumatic seat height adjustment
- Black five-prong, injection molded, fiberglass reinforced nylon Governor base (B7) with dual wheel carpet casters (C1)
- Height and width adjustable arms (AS) that feature a front to back sliding armcap
- Urban, Granite Rock (UR20)
- Urban, Black Coal (UR22)

List Price **\$998**



Truform 5451-3 - page 10
Medium Back Multi-Tilter
Dimensions: 26w x 25d x 38.5h
Ergonomic Features: A, B, C, D, F, G, H, M, N, Q, S

- Pneumatic seat height adjustment
- Standard with adjustable height arms (SC)
- Jenny, Ebony (JN02)

List Price **\$925**



Looover 2662-8 - page 11
Mesh Medium Back Weight Sensing Synchro-Tilter
Dimensions: 25.5w x 25d x 39h
Ergonomic Features: A, B, C, E, H, L, M, N, Q

- Pneumatic seat height adjustment
- Black five-prong, injection molded, fiberglass reinforced nylon Governor base (B7) with dual wheel carpet casters (C1)
- Height and width adjustable arms (AS) that feature a front to back sliding armcap
- Urban, Black Coal (UR22)

List Price **\$1083**



Looover 2661-8 - page 11
Mesh High Back Weight Sensing Synchro-Tilter
Dimensions: 25.5w x 24d x 42.5h
Ergonomic Features: A, B, C, E, H, L, M, N, Q

- Pneumatic seat height adjustment
- Black five-prong, injection molded, fiberglass reinforced nylon Governor base (B7) with dual wheel carpet casters (C1)
- Height and width adjustable arms (AS) that feature a front to back sliding armcap
- Urban, Black Coal (UR22)

List Price **\$1132**



Arno 4003 - page 26
High Back Tilter
Dimensions: 25w x 29d x 42h
Ergonomic Features: A, B, C, N, S

- Perforated leather inserts in the seat and back surfaces
- Standard Black (BK) molded flared loop arms and a five-legged injection molded base with (C65) casters.
- Luxhide Black (BL20)

List Price **\$540**



Synopsis 5091-4 - page 24
Medium Back Tilter
Dimensions: 24.5w x 26.5d x 39.5h
Ergonomic Features: A, B, C, M, N, S

- Ratchet style back height and pneumatic seat height adjustments
- Impact resistant outer back shell.
- Sliding seat depth adjustment
- Urban, Black Coal (UR22)

List Price **\$705**



Synopsis 5090-4 - page 24
High Back Tilter
Dimensions: 24.5w x 26.5d x 43.5h
Ergonomic Features: A, B, C, M, N, S

- Ratchet style back height and pneumatic seat height adjustments
- Impact resistant outer back shell.
- Sliding seat depth adjustment
- Urban, Black Coal (UR22)

List Price **\$752**



Solar 8456 - page 20
Medium Back Mesh Tilter
Dimensions: 23.25w x 25d x 36h
Ergonomic Features: A, B, C, D, E, H, L, M, N, U

- One piece molded frame is extremely light (chair weighs 24 lbs) and exceeds BIFMA standard for commercial applications
- Cascading forward seat surface and reverse edge
- Integrated seat height adjustment lever is intuitive and easy to utilize
- The under seat structure maintains the seamless and fluid aesthetic that defines Solar
- (C1) casters are standard
- Mesh, Storm (STM)
- Plastic, Asphalt (APT)

List Price **\$1088**



Solar 8457 - page 20
Medium Back Mesh Tilter
Dimensions: 23.25w x 25d x 36h
Ergonomic Features: A, B, C, D, E, H, L, M, N, U

- One piece molded frame is extremely light (chair weighs 24 lbs) and exceeds BIFMA standard for commercial applications
- Cascading forward seat surface and reverse edge
- Integrated seat height adjustment lever is intuitive and easy to utilize
- The under seat structure maintains the seamless and fluid aesthetic that defines Solar
- (C1) casters are standard
- Mesh, Midnight (MDN)
- Plastic, Alabaster (ABR)

List Price **\$1193**



A Tilt Tension
Increase or decrease to match body weight. Allows you to rock comfortably, without heavy pushing, reducing muscle fatigue.



B Chair Tilt Lock
Lock the tilt movement in position(s) to accommodate your working posture. Allows you to lock your chair in a comfortable and supportive position. (can be either single position or infinite style).



C Seat Height
Raise or lower to allow your feet to rest flat on the floor. Avoids pressure under your thighs, easing blood flow.



D Back Height
Raise or lower to position lumbar support in your lumbar area. Reduces likelihood of back pain.



E Seat Depth
Change the depth of the seat to accommodate the length of your thighs. Keeps your back in contact with the backrest while avoiding pressure behind your knees.



G Back Angle
Adjust to change the angle of your torso in relation to your thighs. Helps reduce disc pressure and relaxes your back muscles.



H Arm Height
Raise or lower to support your forearms. Reduces muscular effort in neck and shoulders, minimizing risk of pain.



L Synchro-Tilt Movement
Backrest reclines at a faster rate than the seat, increasing the angle between your torso and thighs. Enhances comfort and encourages dynamic body movement.



M Waterfall Seat Edge
Reduces pressure at the back of the knee, contributing to good blood flow.



N Properly Contoured Cushions
Support the body effectively, allowing you to sit longer without discomfort.



Q Width Adjustable Arms
Allows outward movement of armrests to match shoulder breadth. Ensures armrests properly support forearms, reducing muscular effort in neck and shoulders.



R Arm Rotation
Rotate armcap to support your forearm in various positions. Reduces muscular effort in neck and shoulders, minimizing risk of pain.



S Center-Tilt Movement
Chair tilts from a pivot point under the center of the seat allowing you to rock. When your feet are well supported, blood flow is enhanced.



V Lumbar Depth Adjustment
Increase or decrease curvature of the back to match the profile of your lower back. Enhances comfort and support in the lower lumbar area.



Goal 2239-6 - page 13
Low Back Task - Armless
Dimensions: 25w x 24.5d x 39h
Ergonomic Features: C, D, E, N

- Standard with a five-legged, injection molded “spider” base and C65 casters
- Base and frame available in Black (BK) only
- Fusion, Carbon (FU85)

List Price **\$388**



Goal 2237-6 - page 13
Low Back Task
Dimensions: 25w x 24.5d x 39h
Ergonomic Features: C, D, E, H, N

- Standard with adjustable height T-arms with curved urethane armcaps (3N) in Black only
- Standard with a five-legged, injection molded “spider” base and C65 casters
- Base and frame available in Black (BK) only
- Fusion, Carbon (FU85)

List Price **\$503**



Factor 5541-8 - page 4
Mesh Mid Back Weight-Sensing Synchro-Tilter
Dimensions: 26.5w x 24d x 39h
Ergonomic Features: A, B, C, D, E, H, L, M, N, U

- Pneumatic seat height adjustment
- Adjustable lumbar support
- Height adjustable arms (U2)
- Black frame (BK)
- Fusion, Carbon (FU85)

List Price **\$754**



Factor 5540-8 - page 4
Mesh High Back Weight-Sensing Synchro-Tilter
Dimensions: 26.5w x 24d x 41h
Ergonomic Features: A, B, C, D, E, H, L, M, N, U

- Pneumatic seat height adjustment
- Adjustable lumbar support
- Height adjustable arms (U2)
- Black frame (BK)
- Fusion, Carbon (FU85)

List Price **\$792**



Tye 1951-4 - page 10
Mesh Low Back Tilter
Dimensions: 25w x 26d x 41h
Ergonomic Features: A, C, E, H, M, N

- Contemporary mesh fabric and upholstered panels are used on chair backs
- Adjustable height T-arms with curved urethane armcaps (3N) in Black Only
- Five-legged, injection-molded “spider” base
- C65 casters are standard
- Seat depth and pneumatic seat height adjustments. Tilt tension adjustment with tilt lock
- Dobby, Black (DB42)

List Price **\$842**



Tye 1950-4 - page 10
Mesh High Back Tilter
Dimensions: 25w x 26d x 45.5h
Ergonomic Features: A, C, E, H, M, N

- Contemporary mesh fabric and upholstered panels are used on chair backs
- Adjustable height T-arms with curved urethane armcaps (3N) in Black Only
- Five-legged, injection-molded “spider” base
- C65 casters are standard
- Seat depth and pneumatic seat height adjustments. Tilt tension adjustment with tilt lock
- Dobby, Black (DB42)

List Price **\$881**



Vion 6322-8 - page 9
Mesh Medium Back Weight Sensing Synchro-Tilter
Dimensions: 25.5w x 24d x 38h
Ergonomic Features: A, B, C, E, H, L, M, N, Q

- Pneumatic seat height adjustment
- Black five-prong, injection molded, fiberglass reinforced nylon Governor base (B7) with dual wheel carpet casters (C1)
- Height and width adjustable arms (AS) that feature a front to back sliding armcap
- Urban, Granite Rock (UR20)
- Urban, Black Coal (UR22)

List Price **\$945**



Vion 6321-8 - page 9
Mesh High Back Weight Sensing Synchro-Tilter
Dimensions: 25.5w x 24d x 40h
Ergonomic Features: A, B, C, E, H, L, M, N, Q

- Pneumatic seat height adjustment
- Black five-prong, injection molded, fiberglass reinforced nylon Governor base (B7) with dual wheel carpet casters (C1)
- Height and width adjustable arms (AS) that feature a front to back sliding armcap
- Urban, Granite Rock (UR20)
- Urban, Black Coal (UR22)

List Price **\$998**



Truform 5451-3 - page 10
Medium Back Multi-Tilter
Dimensions: 26w x 25d x 38.5h
Ergonomic Features: A, B, C, D, F, G, H, M, N, Q, S

- Pneumatic seat height adjustment
- Standard with adjustable height arms (SC)
- Jenny, Ebony (JN02)

List Price **\$925**



Loover 2662-8 - page 11
Mesh Medium Back Weight Sensing Synchro-Tilter
Dimensions: 25.5w x 25d x 39h
Ergonomic Features: A, B, C, E, H, L, M, N, Q

- Pneumatic seat height adjustment
- Black five-prong, injection molded, fiberglass reinforced nylon Governor base (B7) with dual wheel carpet casters (C1)
- Height and width adjustable arms (AS) that feature a front to back sliding armcap
- Urban, Black Coal (UR22)

List Price **\$1083**



Loover 2661-8 - page 11
Mesh High Back Weight Sensing Synchro-Tilter
Dimensions: 25.5w x 24d x 42.5h
Ergonomic Features: A, B, C, E, H, L, M, N, Q

- Pneumatic seat height adjustment
- Black five-prong, injection molded, fiberglass reinforced nylon Governor base (B7) with dual wheel carpet casters (C1)
- Height and width adjustable arms (AS) that feature a front to back sliding armcap
- Urban, Black Coal (UR22)

List Price **\$1132**



Arno 4003 - page 26
High Back Tilter
Dimensions: 25w x 29d x 42h
Ergonomic Features: A, B, C, N, S

- Perforated leather inserts in the seat and back surfaces
- Standard Black (BK) molded flared loop arms and a five-legged injection molded base with (C65) casters.
- Luxhide Black (BL20)

List Price **\$540**



Synopsis 5091-4 - page 24
Medium Back Tilter
Dimensions: 24.5w x 26.5d x 39.5h
Ergonomic Features: A, B, C, M, N, S

- Ratchet style back height and pneumatic seat height adjustments
- Impact resistant outer back shell.
- Sliding seat depth adjustment
- Urban, Black Coal (UR22)

List Price **\$705**



Synopsis 5090-4 - page 24
High Back Tilter
Dimensions: 24.5w x 26.5d x 43.5h
Ergonomic Features: A, B, C, M, N, S

- Ratchet style back height and pneumatic seat height adjustments
- Impact resistant outer back shell.
- Sliding seat depth adjustment
- Urban, Black Coal (UR22)

List Price **\$752**



Solar 8456 - page 20
Medium Back Mesh Tilter
Dimensions: 23.25w x 25d x 36h
Ergonomic Features: A, B, C, D, E, H, L, M, N, U

- One piece molded frame is extremely light (chair weighs 24 lbs) and exceeds BIFMA standard for commercial applications
- Cascading forward seat surface and reverse edge
- Integrated seat height adjustment lever is intuitive and easy to utilize
- The under seat structure maintains the seamless and fluid aesthetic that defines Solar
- (C1) casters are standard
- Mesh, Storm (STM)
- Plastic, Asphalt (APT)

List Price **\$1088**



Solar 8457 - page 20
Medium Back Mesh Tilter
Dimensions: 23.25w x 25d x 36h
Ergonomic Features: A, B, C, D, E, H, L, M, N, U

- One piece molded frame is extremely light (chair weighs 24 lbs) and exceeds BIFMA standard for commercial applications
- Cascading forward seat surface and reverse edge
- Integrated seat height adjustment lever is intuitive and easy to utilize
- The under seat structure maintains the seamless and fluid aesthetic that defines Solar
- (C1) casters are standard
- Mesh, Midnight (MDN)
- Plastic, Alabaster (ABR)

List Price **\$1193**



A Tilt Tension
Increase or decrease to match body weight. Allows you to rock comfortably, without heavy pushing, reducing muscle fatigue.



B Chair Tilt Lock
Lock the tilt movement in position(s) to accommodate your working posture. Allows you to lock your chair in a comfortable and supportive position. (can be either single position or infinite style).



C Seat Height
Raise or lower to allow your feet to rest flat on the floor. Avoids pressure under your thighs, easing blood flow.



D Back Height

Raise or lower to position lumbar support in your lumbar area. Reduces likelihood of back pain.



E Seat Depth
Change the depth of the seat to accommodate the length of your thighs. Keeps your back in contact with the backrest while avoiding pressure behind your knees.



G Back Angle
Adjust to change the angle of your torso in relation to your thighs. Helps reduce disc pressure and relaxes your back muscles.



H Arm Height
Raise or lower to support your forearms. Reduces muscular effort in neck and shoulders, minimizing risk of pain.



L Synchro-Tilt Movement
Backrest reclines at a faster rate than the seat, increasing the angle between your torso and thighs. Enhances comfort and encourages dynamic body movement.



M Waterfall Seat Edge
Reduces pressure at the back of the knee, contributing to good blood flow.



N Properly Contoured Cushions
Support the body effectively, allowing you to sit longer without discomfort.



Q Width Adjustable Arms
Allows outward movement of armrests to match shoulder breadth. Ensures armrests properly support forearms, reducing muscular effort in neck and shoulders.



R Arm Rotation
Rotate armcap to support your forearm in various positions. Reduces muscular effort in neck and shoulders, minimizing risk of pain.



S Center-Tilt Movement
Chair tilts from a pivot point under the center of the seat allowing you to rock. When your feet are well supported, blood flow is enhanced.



V Lumbar Depth Adjustment
Increase or decrease curvature of the back to match the profile of your lower back. Enhances comfort and support in the lower lumbar area.



Luray 6461 - page 25
High Back Tilter
Dimensions: 25w x 25d x 42.5h
Ergonomic Features: A, B, C, M, N, S, U

- Stitch detail on edges of seat and back is discrete, using matched thread as standard
- Standard with Global's high quality Soft Descent™ pneumatic lift
- Five prong, injection molded, fiberglass reinforced, nylon medium rise base (B7B) with (C1) dual wheel carpet casters
- Allante FRee, Ink (A16F)

List Price
(Terrace Fabric - Grade 1) **\$1249**

List Price
(Allante FRee Vinyl - Grade 2) **\$1327**



Global Accord 2671-4 - page 18
Medium Back Tilter
Dimensions: 25w x 25d x 37h
Ergonomic Features: A, B, C, M, N, S, U

- Features a sling back style that molds to and evenly supports the back and spine
- Cast aluminum with a mirror finish accent the arms and base
- Soft touch self-skinned urethane armcaps are available in Black Only.
- Standard with an arched aluminum spider base and (C1) casters
- Allante FRee, Ink (A16F)

List Price **\$1264**



Global Accord 2670-4 - page 18
High Back Tilter
Dimensions: 25w x 25d x 44h
Ergonomic Features: A, B, C, M, N, S, U

- Features a sling back style that molds to and evenly supports the back and spine
- Cast aluminum with a mirror finish accent the arms and base
- Soft touch self-skinned urethane armcaps are available in Black Only.
- Standard with an arched aluminum spider base and (C1) casters
- Allante FRee, Ink (A16F)

List Price **\$1304**



Concorde 2424-18 - page 27
24 Hr High Back Synchro-Tilter
Dimensions: 28.5w x 27d x 50h
Ergonomic Features: A, B, C, D, E, L, M, N, Q, T

- Seat cushion with Velcro attachment is easily removed and replaced
- Rated for Multi-Shift use for persons up to 350 pounds
- Pneumatic seat height adjustment and 5 - position tilt lock. Tilt tension control
- Ratchet style back height adjustment
- Standard with a reinforced five-legged, injection molded base with (C10) casters, Black (BK) Only
- Prescott, Black Ink (PD03)

List Price **\$4388**



Citi 7885 - page 31
End Table with Laminate Top
Dimensions: 24w x 20d x 20h

- Compact, contemporary design includes raised legs
- Laminate, Black (BLK)

List Price **\$827**



Citi 7875 - page 31
Lounge Chair
Dimensions: 30w x 31d x 30h

- Compact, contemporary design includes raised legs
- Fully upholstered. Fixed seat and back cushions. Raised metal tubular legs
- Horizontal stitch detail
- Luxhide Black (BL20)

List Price **\$1517**



Citi 7876 - page 30
Two Seat Sofa
Dimensions: 50.5w x 31d x 30h

- Compact, contemporary design includes raised legs
- Fully upholstered. Fixed seat and back cushions. Raised metal tubular legs
- Horizontal stitch detail
- Luxhide Black (BL20)

List Price **\$2046**



Citi 7877 - page 31
Three Seat Sofa
Dimensions: 72w x 31d x 30h

- Compact, contemporary design includes raised legs
- Fully upholstered. Fixed seat and back cushions. Raised metal tubular legs
- Horizontal stitch detail
- Luxhide Black (BL20)

List Price **\$2575**



Height Adjustable Stool 2241 - page 15
Height Adjustable Stool Kit

- Stool kit with 6" extension tube
- Contains Black four-spoked footrest with chrome outer ring, extension tube and Black 26.5" chair base
- For use with existing task chairs
- Casters not included

List Price **\$391**



Height Adjustable Stool 2243 - page 15
Height Adjustable Stool Kit

- Stool kit with 10" gas cylinder
- Contains Black four-spoked footrest with chrome outer ring, 10" gas cylinder and Black 26.5" chair base.
- For use with existing task chairs
- Casters not included

List Price **\$604**



Goal 2236-6 - page 15
Height Adjustable Stool - Armless
Dimensions: 20.5w x 24.5d x 48h
Ergonomic Features: C, D, H, N

- Standard with a five-legged, injection molded "spider" base and (C65) casters
- Base and frame available in Black (BK) only
- Fusion, Carbon (FU85)

List Price **\$575**



File Buddy 1105 - page 15, 59
Pneumatic Swivel Stool
Dimensions: 14dia x 16.25h - 21.25h

- Allante FRee, Ink (A16F)

List Price **\$827**



A Tilt Tension
Increase or decrease to match body weight. Allows you to rock comfortably, without heavy pushing, reducing muscle fatigue.



B Chair Tilt Lock
Lock the tilt movement in position(s) to accommodate your working posture. Allows you to lock your chair in a comfortable and supportive position. (can be either single position or infinite style).



C Seat Height
Raise or lower to allow your feet to rest flat on the floor. Avoids pressure under your thighs, easing blood flow.



D Back Height
Raise or lower to position lumbar support in your lumbar area. Reduces likelihood of back pain.



E Seat Depth
Change the depth of the seat to accommodate the length of your thighs. Keeps your back in contact with the backrest while avoiding pressure behind your knees.



G Back Angle
Adjust to change the angle of your torso in relation to your thighs. Helps reduce disc pressure and relaxes your back muscles.



H Arm Height
Raise or lower to support your forearms. Reduces muscular effort in neck and shoulders, minimizing risk of pain.



L Synchro-Tilt Movement
Backrest reclines at a faster rate than the seat, increasing the angle between your torso and thighs. Enhances comfort and encourages dynamic body movement.



M Waterfall Seat Edge
Reduces pressure at the back of the knee, contributing to good blood flow.



N Properly Contoured Cushions
Support the body effectively, allowing you to sit longer without discomfort.



Q Width Adjustable Arms
Allows outward movement of armrests to match shoulder breadth. Ensures armrests properly support forearms, reducing muscular effort in neck and shoulders.



R Arm Rotation
Rotate armcap to support your forearm in various positions. Reduces muscular effort in neck and shoulders, minimizing risk of pain.



S Center-Tilt Movement
Chair tilts from a pivot point under the center of the seat allowing you to rock. When your feet are well supported, blood flow is enhanced.



V Lumbar Depth Adjustment
Increase or decrease curvature of the back to match the profile of your lower back. Enhances comfort and support in the lower lumbar area.



Duet 6621 - page 41
Stacking Side Chair - Armless
Dimensions: 20.75w x 22.75d x 33.25h

- Clear polycarbonate glides (CG) are standard and suitable for carpet, rubber or concrete flooring
- Weight capacity for this series is 300 lbs.
- Night (BLK)
- Cloud (IVC)
- Shadow (SHW)

List Price **\$261**



Duet 6620 - page 41
Stacking Armchair
Dimensions: 25.5w x 22.75d x 33.25h

- Clear polycarbonate glides (CG) are standard and suitable for carpet, rubber or concrete flooring
- Weight capacity for this series is 300 lbs.
- Night (BLK)
- Cloud (IVC)
- Shadow (SHW)

List Price **\$368**



Popcorn 6711 - page 39
Stacking Side Chair - Armless
Dimensions: 20w x 23.5d x 32.5h

- Chair frame is constructed of 1/2" diameter solid chrome steel rod
- Wall saver frame design; the base touches the wall before the upper back to protect the wall from damage
- Upper back features a cut out hand hold to assist in stacking and transportation
- Seat and back is a one piece polypropylene shell
- Night (BLK)
- Cloud (IVC)
- Shadow (SHW)
- Clear Glides (6716) and Dolly (6715) are available (pg 43)

List Price **\$228**



Popcorn 6710 - page 39
Stacking Armchair
Dimensions: 24.5w x 23.5d x 32.5h

- Chair frame is constructed of 1/2" diameter solid chrome steel rod
- Wall saver frame design; the base touches the wall before the upper back to protect the wall from damage
- Upper back features a cut out hand hold to assist in stacking and transportation
- Seat and back is a one piece polypropylene shell
- Night (BLK)
- Dolly (6715) is available (pg 43)

List Price **\$347**



Bakhita 6751 - page 34
Stacking Side Chair - Armless
Dimensions: 18w x 21d x 31.5h

- All polymer chair intended for use indoors or outdoors. Weather resistant, UV resistant, stain resistant
- Inside is a structural nylon frame for strength. Outside is a durable polypropylene light fast compound
- Chair legs are equipped with translucent non-marking glides as standard
- Alloy (ALY)
- Char (CHA)
- Milk (MLK)
- Bakhita Tables are available (pg 65)
- Dolly (6783) is available (pg 38)

List Price **\$261**



Bakhita 6750 - page 34
Stacking Armchair
Dimensions: 22.5w x 21d x 31.5h

- All polymer chair intended for use indoors or outdoors. Weather resistant, UV resistant, stain resistant
- Inside is a structural nylon frame for strength. Outside is a durable polypropylene light fast compound
- Chair legs are equipped with translucent non-marking glides as standard
- Alloy (ALY)
- Char (CHA)
- Milk (MLK)
- Bakhita Tables are available (pg 65)
- Dolly (6783) is available (pg 38)

List Price **\$294**



Bakhita 6754 - page 34
Stacking Stool - Armless
Dimensions: 19.25w x 18.75d x 40.5h

- All polymer chair intended for use indoors or outdoors. Weather resistant, UV resistant, stain resistant
- Inside is a metal frame for strength. Outside is a durable polypropylene light fast compound
- Chair legs are equipped with translucent non-marking glides as standard
- Alloy (ALY)
- Char (CHA)
- Milk (MLK)
- Bakhita Tables are available (pg 65)
- Dolly (6783) is available (pg 38)

List Price **\$395**



Spyker 6791 - page 36
Stacking Side Chair - Armless
Dimensions: 17.91w x 20.86d x 31.29h

- All polymer chair intended for use indoors or outdoors. Weather resistant, UV resistant, stain resistant
- Chair legs are equipped with translucent non-marking glides as standard
- Alloy (ALY)
- Char (CHA)

List Price **\$234**



Spyker 6790 - page 36
Stacking Armchair
Dimensions: 17.91w x 20.86d x 31.29h

- All polymer chair intended for use indoors or outdoors. Weather resistant, UV resistant, stain resistant
- Chair legs are equipped with translucent non-marking glides as standard
- Alloy (ALY)
- Char (CHA)

List Price **\$261**



Flap 6775 - page 35
Folding Chair
Dimensions: 19w x 21.5d x 33.5h

- A durable folding chair that can expand the audience quickly for large gatherings or support more people in small spaces.
- For use indoors or out, the sleek, comfortable, all technopolymer design makes Flap a versatile favorite for offices, schools, event venues and patient rooms.
- Alloy (ALY)
- Milk (MLK)
- Wall Hook (6776) and Dolly (6777) are available (pg 39)

List Price **\$214**



Sonic 6508 - page 40
Stacking Side Chair - Armless
Dimensions: 21.5w x 21.5d x 33h

- Standard with a straight leg
- Standard with Chrome (CH) legs
- Night (BLK)

List Price **\$331**



Sonic 6513 - page 40
Stacking Armchair
Dimensions: 23w x 21.5d x 33h

- Standard with a straight leg
- Standard with Chrome (CH) legs
- Night (BLK)

List Price **\$403**



Arno 4004 - page 26
High Back Tilter
Dimensions: 25w x 29d x 42h
Ergonomic Features: A, B, C, N, S

- Perforated leather inserts in the seat and back surfaces
- Standard Black (BK) molded flared loop arms
- Luxhide Black (BL20)

List Price **\$540**



Sidero 6900 - page 38
Stacking Armchair
Dimensions: 25.5w x 24d x 33h

- Wide curved arms and a round tubular steel frame, with wall safe construction
- Arms are 2 1/8 inches wide and full length, and are made from incredibly strong fiberglass reinforced nylon
- The back of the chair is compound curved to provide comfort and support
- Four legged models can be stacked 5 high on the floor
- Standard glide is a durable Black Polypropylene foot.
- Urban, Granite Rock (UR20)
- Urban, Black Coal (UR22)

List Price **\$588**



Roma 1899 - page 12, 38
Mesh Back Nesting Armchair
Dimensions: 24.5w x 23.6d x 36h
Ergonomic Features: M, N

- The horizontal nesting chairs are easy to store. Simply flip the seat upward and then roll into nesting position, like a shopping cart.
- Arms are durable fiberglass reinforced nylon, fixed height. Armcaps are durable polyurethane (SSU), soft and warm to the touch.
- Stocked in Black (BLK).
- (C1) casters are standard.
- Urban, Black Coal (UR22)

List Price **\$773**



A Tilt Tension
Increase or decrease to match body weight. Allows you to rock comfortably, without heavy pushing, reducing muscle fatigue.



B Chair Tilt Lock
Lock the tilt movement in position(s) to accommodate your working posture. Allows you to lock your chair in a comfortable and supportive position. (can be either single position or infinite style).



C Seat Height
Raise or lower to allow your feet to rest flat on the floor. Avoids pressure under your thighs, easing blood flow.



D Back Height
Raise or lower to position lumbar support in your lumbar area. Reduces likelihood of back pain.



E Seat Depth
Change the depth of the seat to accommodate the length of your thighs. Keeps your back in contact with the backrest while avoiding pressure behind your knees.



G Back Angle
Adjust to change the angle of your torso in relation to your thighs. Helps reduce disc pressure and relaxes your back muscles.



H Arm Height
Raise or lower to support your forearms. Reduces muscular effort in neck and shoulders, minimizing risk of pain.



L Synchro-Tilt Movement
Backrest reclines at a faster rate than the seat, increasing the angle between your torso and thighs. Enhances comfort and encourages dynamic body movement.



M Waterfall Seat Edge
Reduces pressure at the back of the knee, contributing to good blood flow.



N Properly Contoured Cushions
Support the body effectively, allowing you to sit longer without discomfort.



Q Width Adjustable Arms
Allows outward movement of armrests to match shoulder breadth. Ensures armrests properly support forearms, reducing muscular effort in neck and shoulders.



R Arm Rotation
Rotate armcap to support your forearm in various positions. Reduces muscular effort in neck and shoulders, minimizing risk of pain.



S Center-Tilt Movement
Chair tilts from a pivot point under the center of the seat allowing you to rock. When your feet are well supported, blood flow is enhanced.



V Lumbar Depth Adjustment
Increase or decrease curvature of the back to match the profile of your lower back. Enhances comfort and support in the lower lumbar area.

work space + meeting areas





Monitor Arms

Productivity Solutions™ naturally connect people with technology to enhance comfort and productivity.



PSMA1
G7 Single Monitor Arm
Finger touch dynamic height adjustment provides 12" of height adjustment. 4.4 to 19.8 lbs. per monitor loading capacity; accepts screen size 17"-30". Maximum of 22" extension from rear of desk to back of monitor, folds to 5.5". Tilt, pan and landscape to portrait rotation, quick release VESA plate, 180° lock out. Clamp mount and grommet mount options included; clamp accommodates 0.5" to 1.9" thick tops.
***\$350**

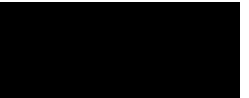


PSMA2
G7 Double Monitor Arm
Finger touch dynamic height adjustment provides 12" of height adjustment. 4.4 to 19.8 lbs. per monitor loading capacity; accepts screen size 17" - 30". Maximum of 22" extension from rear of desk to back of monitor, folds to 5.5". Tilt, pan and landscape to portrait rotation; quick release VESA plate, 180° lock out. Clamp mount and grommet mount options included; clamp accommodates 0.67" to 2.3" thick tops.
***\$580**



PSMS
G7 Mini Slide Monitor Arm
Works with PSMA1 and PSMA2 monitor arms. Provides 11.8" slide with a loading capacity of 13.2 lbs.
***\$115**

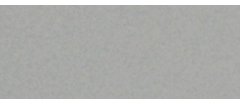
Available immediately in the following finishes:



BLK Black



DWT White



TUN Tungsten

For specifications and dimensions see page 55.

Swap Tables

It's a simple thing done right. The right proportions. Flawless surfaces. Perfect structure. Squares or rounds at the floor with a gentle float.



SEATED HEIGHT TABLE PACKAGE
GRB22-TUN GRBTP36

\$1139



BAR HEIGHT TABLE PACKAGE
GRB22H41-TUN GRBTP36

\$1193

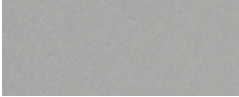
Available immediately
in the following finishes:



ACJ Absolute Acajou



DWT White



TUN Tungsten



Swap Tables Components



GRBTP36
3' Round Table Top
36dia x 1h
\$361



GRB22 (TUN)
Seat Height Round Base
\$870



GRB22H41 (TUN)
Bar Height Round Base
\$928

Bakhita Tables

A stable four-legged base enables seating to tuck in effortlessly. Standard and bar height tables are offered in 28" round and square tops, in Milk with Silver bases.



Bakhita 6780
Round Table
List Price \$568
Shown in Milk (MLK).



Bakhita 6781
Round Table, Bar Height
List Price \$581
Shown in Milk (MLK).



Bakhita 6785
Square Table
List Price \$621
Shown in Milk (MLK).



Bakhita 6786
Square Table, Bar Height
List Price \$634
Shown in Milk (MLK).

Available immediately
in the following plastic finish:



MLK Milk

For Bakhita seating see page 34.

Foli Height Adjustable Tables

Electric height adjustment allow users to move between sitting and standing.



HEIGHT ADJUSTABLE BASE



PH3T6601
Height Adjustable Table Base
\$1255



PH3TLK6601
3rd Leg Kit
\$861

HEIGHT ADJUSTABLE LAMINATE TABLE TOPS



PHAT2970T
Height Adjustable Table Top
\$587

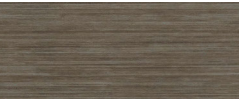


PHAT2958T
Height Adjustable Table Top
\$536

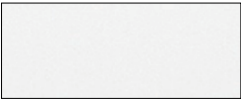


PHAT2346T
Height Adjustable Table Top
\$431

Available immediately
in the following finishes:



ACJ Absolute Acajou



DWT White

Swap Tables (page 52)



GRBTP36
3' Round Table Top
36dia x 1h
\$361



GRB22 (TUN)
Seat Height Round Base
\$870



GRB22H41 (TUN)
Bar Height Round Base
\$928

Bakhita Tables (page 53)



6780
Round Table
28.5d x 28.5w x 29.5h
\$568



6781
Round Table, Bar Height
28.5d x 28.5w x 40h
\$581



6785
Square Table
28.5d x 28.5w x 29.5h
\$621



6786
Square Table, Bar Height
28.5d x 28.5w x 40h
\$634

Foli Height Adjustable Tables (page 54)



PH3T6601
Height Adjustable Table Base
10w x 26.8h
\$1255



PH3TLK6601
3rd Leg Kit
10d x 26.8h
\$861



PHAT2970T
Height Adjustable Table Top
70w x 29d x 1h
\$587



PHAT2958T
Height Adjustable Table Top
58w x 29d x 1h
\$536



PHAT2346T
Height Adjustable Table Top
46w x 23d x 1h
\$431

Monitor Arms (page 51)



PSMA1
G7 Single Monitor Arm
5.5d x 21h
\$350



PSMA2
G7 Double Monitor Arm
5.5d x 21h
\$580



PSMS
G7 Mini Slide Monitor Arm
6w x 11d x 4.5h
\$115

filing + storage



Filing + Storage

Global provides a variety of innovative and cost effective “Storage Solutions” that can react to your daily demands.



9336P-2F1H
36" Wide 2 Drawer Lateral File
36w x 18d x 27.125h
Shown in Designer White (DWT).
\$985



9336P-3F1H
36" Wide 3 Drawer Lateral File
36w x 18d x 40.5h
Shown in Designer White (DWT).
\$1307



9336P-4F1H
36" Wide 4 Drawer Lateral File
36w x 18d x 54h
Shown in Designer White (DWT).
\$1640



9336P-5F1H
36" Wide 5 Drawer Lateral File
36w x 18d x 65.25h
Shown in Designer White (DWT).
\$2065



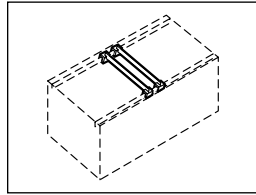
9336-S72L
Storage Cabinet
36w x 18d x 72h
Shown in Designer White (DWT).
\$840



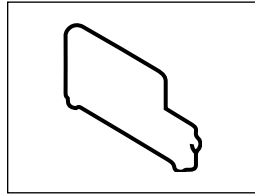
9336P-S72L
Storage Cabinet (Looped Full Pull) 36w x 18d x 72h
Shown in Designer White (DWT).
\$840



File Buddy 1105
Pneumatic Swivel Stool
Dimensions: 14dia x 16.25h - 21.25h
Shown in Allante FFree, Ink (A16F).
\$447

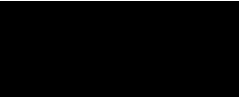


FBB
Front-to-Back Hanging File Bars
\$30



PD
Plate Dividers
\$43

Available immediately in the following finishes:



BLK Black

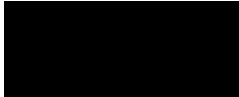


DWT Designer White



LGR Light Grey

Available immediately in the following finishes:



BLK Black



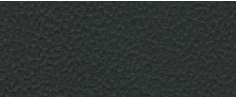
DWT Designer White



LGR Light Grey

Available immediately in the following textile:

Allante FFree



A16F Ink

GLOBAL SEATING	
Arno	
4003.....	26
4004.....	26
Bakhita	
6750.....	34
6751.....	34
6754.....	34
6783.....	38
Citi	
7875*.....	31
7876*.....	30
7877*.....	28-29, 31
7885.....	31
Concorde	
2424-18*.....	27
Height Adjustable Stool Kit	
2241.....	15
2243.....	15
Duet	
6620*.....	41
6621.....	41
6624.....	41
Factor	
5540-8.....	4-7
5541-8.....	4-5
File Buddy	
1105.....	15, 59
Flap	
6775.....	32-33, 35
6776.....	35
6777.....	35
Global Accord	
2670-4.....	22
2671-4.....	22-23
Goal	
2237-6.....	13
2239-6.....	13, 15
2237-5.....	13
Loover	
2661-8.....	11
2662-8.....	11
Luray	
6461.....	25

Popcorn	
6710*.....	39
6711*.....	39
6715.....	39
6716.....	39
Roma	
1899*.....	12, 38
Sidero	
6900.....	38
Solar	
8456.....	20, 22-23
8457.....	16-17, 20-21
Sonic	
6508.....	40
6513.....	40
Spyker	
6790.....	36
6791*.....	36-37
6783.....	34
Synopsis	
5090-4.....	24
5091-4.....	24
Truform	
5451-3.....	10
Tye	
1950-4.....	10
1951-4.....	10
Vion	
6321-8.....	8-9
6322-8.....	2-3, 8-9
GLOBAL WORKSPACE + MEETING AREAS	
Bakhita Tables.....	34, 53
Foli Height Adjustable Tables.....	3, 6, 14, 54
Monitor Arms.....	50-51
Swap Tables.....	22, 48-49, 52
GLOBAL FILING + STORAGE	
9300 Plus Lateral Files.....	58
File Buddy 1105.....	59
Storage Cabinets.....	59

**Not suitable for FedEx or UPS shipment*

